



Okile Obulubulu Primary School Borehole
was rehabilitated by
Prince of Peace Orphans and Widows Vision (POPOW)
and Obiai, Ojangai, Okile landing and
Asana A & B Communities
In partnership with Surge for Water
Funded by Health Goes Global
April 2022

Health Goes Global

Elevating quality of life in underserved areas of our world through preventative health care.



2022 IMPACT REPORT

Board of Directors:

Hannah Akre

Geneva Stolze

Betsy Assoumou

Alexandra Lazares

Ethan Klausmeyer

2022 IMPACT

Bululu Primary School New Well Drill

Obur Village, Kalaki, Uganda

Partner since 2020: Surge for Water

Well Drill contribution \$4,250 (of \$9,649 total cost)



IMPACT

- These efforts will bring clean and safe drinking water to **1,649 people** - 1,638 students and 11 teachers
- All water sources are tested for contamination before and after construction. Tests will be conducted by our local team for 2 years post intervention to ensure that the Borehole is properly maintained



The community and school children watch as the drilling process begins.

BACKGROUND

Health Goes Global is proud to work with **Surge for Water** on our biggest collaboration in 2022! Since 2008, Surge for Water has been investing in communities to provide holistic, sustainable, and long-term solutions with a focus on clean water. Our work will impact the Kalaki community, which is one of the 'Forgotten Districts' of Northern Uganda. These communities were the last frontier for Uganda's most recent civil wars, which resulted in extreme poverty and lack of safe water access. As a result, these vulnerable communities suffer from water, sanitation, and hygiene-related illnesses.

Students at Bululu Primary School relied on a well 800 meters away. This was the only water source in the area, and in addition to serving the students at the school, it was also used by over 2,000 people from two villages. Students were not given priority at the water source and often waited in line for 45 minutes, making them miss school and affecting their learning.

"On behalf of the pupils and teachers of Bululu Primary School, I would like to sincerely thank Health Goes Global for their support. It had been my deep concern, the welfare of these learners, when it came to having access to clean and safe water. The school also needed water to maintain the sanitation of the school facilities, including the latrines. All the water challenges we faced have now been resolved. I have great relief and joy as the head of the school, and I now expect a better and friendlier school environment for our young learners, the teachers, and the surrounding community as a whole."

- Ejibu Francis, Head Teacher

2022 IMPACT

Okile-Obulubulu Primary School Well Rehabilitation

Obiai Village, Kaberamaido, Uganda

Partner since 2020: Surge for Water

Well Rehabilitation contribution \$3,000 (of \$4,149 total cost)

BACKGROUND

The borehole at Okile- Obulubulu Primary School was drilled in 2016 by the Kaberamaido District Government. Although it was only six years old, the borehole infrastructure had cracks all over. The pipes, rods, and cylinder were all worn-out, which not only affected the flow rate but also led to frequent breakdowns.

Rehabilitating a well rather than drilling a new well is the most sustainable way to increase access to clean water. This well needed repairs and we stepped in to help!

Below you can see the dilapidated well that was contaminated by animal waste and had a minimal and unreliable flow rate.



IMPACT

- These efforts bring clean and safe drinking water to **1,500 people - 709 students and 791 community members**

"No matter its location, every school needs the necessary facilities to be friendly to the users. With our school borehole now rehabilitated and functional, our dreams can turn into reality. Moving forward, no more wasting lesson time in search for water at the lake. We shall now have ample time to catch-up on what we missed at school during COVID-19 closures. Thank you Health Goes Global!"

- Apio Martha, student

2022 IMPACT

Okile-Obulubulu Primary School Girls Latrine Construction

Obiai Village, Kaberamaido, Uganda

Partner since 2020: Surge for Water

Latrine Construction contribution \$7,000 (of \$8,380 total cost)
WASH Training \$1,000

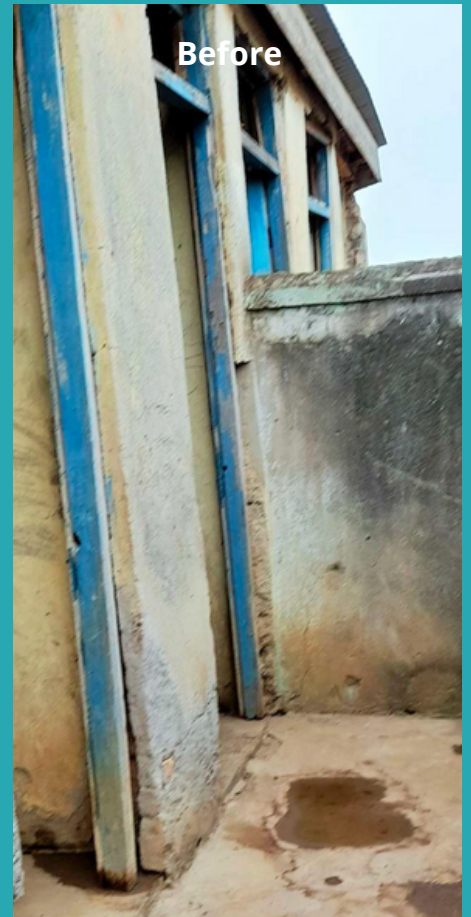


BACKGROUND

It is imperative to separate sources of clean water from human waste. This is a fundamental pillar of preventive health. Thus, we partner our clean water initiatives with hygiene projects, such as constructing latrines.

The Okile-Obulubulu Primary School had dilapidated and unsanitary latrines. The latrines at the school had eroded, broken floors, no hand-washing facilities, and no doors.

The latrines we constructed have 5 stalls and a washroom. There will be an incinerator for contaminated hygiene products and the roof will collect rain water to supply the sinks with water.



Before

IMPACT

- **353 girls** now have access to 5 clean, well-ventilated, private latrines
- Water catchment system allows for running sink water and provided soap allows for proper hand hygiene
- The construction of these latrine created 24 temporary jobs in the community
- Once full, the toilets can be drained (not replaced).
- 370 Students Received WASH Training (**W**ater, **S**anitation and **H**ygien) a pillar of preventive health

"These toilets mean improved health, income, dignity, and overall well-being for generations to come!"

-Shilpa Alva
Executive Director & Founder
Surge for Water

2022 IMPACT

Kopila Valley Clinic

Surkhet, Nepal

Partner since 2020: Blink Now

\$5,000 to Health and Wellness Program

- covering 15.2% of the total operational budget

BACKGROUND

After the Kopila Valley School opened in 2011, **BlinkNow** quickly realized that many students attending school were not healthy or nourished. To this end, the Kopila Valley Health Clinic was established in 2011 to provide preventive and primary care, as well as basic health education to the students and staff of Kopila Valley. Through education and prevention, the Clinic's full-time clinic administrator and pharmacist have worked endlessly over the years to keep the Kopila Valley students healthy and strong.

The Clinic serves over 420 students, 120 staff members as well as low socioeconomic community members who need support fulfilling prescriptions and other basic medical needs.



IMPACT KOPILA VALLEY CLINIC:

In 2022, the Kopila Valley Clinic saw 2282 patients offering the following:

- Annual physical examinations at the beginning of each school year
- Basic first aid for minor injuries
- Early treatment for common conditions such as mild pneumonia or skin infections
- Hearing and vision screenings
- A school-wide anti-parasitic program to decrease and prevent intestinal parasites
- An extensive dental hygiene program, including daily tooth brushing at school, dental exams by a local dentist and treatment when necessary
- Tuberculosis screening
- Covid testing and support
- Distributed iron and folic acid medicine to female students
- Nutrition support and coordination with the school feeding program
- Taught handwashing and sanitary techniques to students and distributed hygiene packages, including soap and sanitizers.
- Delivered student orientation on a variety of topics, including personal hygiene and road safety

2022 IMPACT

Mental Health & Family Support Center

Surkhet, Nepal

Partner since 2020: Blink Now

*\$5,000 to Mental Health and Family Support Program
- covering 25.5% of the total operational budget*



IMPACT MENTAL HEALTH AND FAMILY DEVELOPMENT CENTER:

The Counseling and Mental Health Center saw 2,267 individuals in 2022

- Delivered student orientation on bullying, verbal self-defense, communication skills, and good touch/bad touch
- Ran a community awareness program on verbal self-defense
- Delivered training for teachers, including first aid, the importance of school-based psychosocial promotional activities, how to identify children and adolescents with emotional and behavioral problems, when to refer to the school counselor and further expert-level support, and more.

The Family Development Center supported 800 individuals in 2022

- Delivered community workshops on the following topics: health insurance, maternal and child care, stress management, internal conflicts, substance abuse, and ways to support each other.
- Enrolled 22 families in the government health insurance policy and delivered an orientation on how to use the health cards.
- Phased out 29 families from the first cycle of the Family Development Program (FDP) and completed enrollment for the second cycle
- Inaugurated Community "Hub" clinic that will provide the greater Surkhet region with these resources

This year in 2022 we have expanded our impact beyond the Kopila Valley Clinic and now additionally support the Mental Health Program and Family Development Center. The aim of these programs is to address the number one killer of young girls in Nepal, suicide. This program helps identify at-risk students and provide them with treatment and support. The Family Support Center extends these services to the community and educates them about government and community resources to help better their situations. Additionally, this year 434 of the individual interactions were home visits. These home visits happen when the Clinic or BlinkNow hears of a home situation that could use intervention and takes it upon themselves to bring care and resources to the home.

"The entire staff of BlinkNow would like to thank Health Goes Global for your support. We believe it is critical—especially now—to provide proper and timely healthcare to our students and staff. Your assistance is not only directly helping individuals in this time of urgent need, but also helps us to realize our wider vision that every child is safe, educated, and loved. We are very fortunate to have you as a part of the BlinkNow family!"

-Bidisa Rai
Director of Development
BlinkNow

BACKGROUND

Project 10,000 is an effort to reduce maternal and infant mortality rates in Africa by providing 10,000 women with kits containing the supplies necessary for a sterile birth and items to keep their newborn warm.

Each woman has a one on one conversation with a volunteer and translator if needed to ensure they understand the Project 10,000 program. They then attend a 30-minute educational lecture about pregnancy and signs of distress. They are given the birthing kits and instructions on who can use them to help during their delivery.

Maternal and infant mortality rates in Africa are unacceptably high. Many women and babies die from infection after childbirth and the sterility of birthing supplies seems to lie at the heart of the problem. By providing pregnant women with kits containing sterile equipment, which they will give to the doctor at the time of delivery, we can dramatically decrease postpartum complications. The kits will also include items to ensure babies are kept warm and dry after birth.

2022 IMPACT

Project 10,000 M'bour, Senegal

Partner since 2020: Partners for World Health

\$3,000



Quantitative studies showed a positive impact of Clean Birthing Kits (CBK) on reducing the incidence of puerperal sepsis and neonatal tetanus. The review also identified CBK use to be associated with a reduction in perinatal, neonatal and young infant mortality.

Citation: Lassi, Z. S. et al, (2019). Effectiveness of birthing kits for clean childbirth: A systematic review. International Health, 12(1), 3-10. doi:10.1093/inthealth/ihz022

IMPACT

- Shipment of checked bags
- Bringing 350 birthing kits to Senegal
- Supplying 90 days of prenatal folic acid vitamins and post-delivery iron supplements
- Carried out 105 interviews during educational sessions

2022 IMPACT

Ngäbe Community Support:

Bocas del Torro, Panama

Partner since 2017: Floating Doctors

\$3,000



IMPACT:

Items purchased with our contribution:

- 2,590 bars of soap

BACKGROUND

Health Goes Global supports the sustainable health care brought to vulnerable, remote Ngäbe communities in the archipelagos of Bocas del Torro, Panama. For some Ngäbe people, they would have to travel 6 hours by boat to the nearest hospital to seek medical care. Fortunately, mobile clinics to these communities are carried out by **Floating Doctors**. Ongoing primary care, emergency care, dental care, education, advocacy, training, and community development is brought to upwards of 200 patients on clinic days. An emphasis on preventative care and sustainability is achieved by revisiting these remote villages every 3 months to manage their chronic health issues.

In 2022, we focused our support on supplying each patient seen with enough soap for themselves and each member of their family. Hand hygiene is one of the best ways to prevent illness within a home, especially with young school-age children.

2022 Impact Summary



- 3,149 people gained access to clean water
 - 1 new well construction
 - 1 well rehabilitated in Uganda
- 353 students gained access to sanitation
 - 5 latrines built in Uganda
- 2,232 people received health care in Nepal
- 2,267 people in Nepal accessed the Mental Health Program
- 800 individuals received support from the Family Development Center in Nepal
- 350 birthing kits were brought to Senegal
- 105 moms had one on one interviews with birthing educational sessions
- 2,590 bars of soap were distributed in Panama



Thank you for being a part of our
Health Goes Global community!

Make a donation at
www.healthgoesglobal.org/donate